

CROSSROADS MIDDLE SCHOOL


6TH GRADE
PARENT ORIENTATION
2023-2024

Welcome to Crossroads South!



WHAT TO EXPECT
WHEN YOU'RE
EXPECTING...



**A
MIDDLE
SCHOOLER!**



General Information

Communications & Connections

- **THE PARENT "HUB"** (https://docs.google.com/spreadsheets/d/1WvX_NUU_2grspkMi_nXY1mbqTijPWmqhtexvOloCyKg/edit#usp=sharing)
- **Virtual Principal's Office**
https://docs.google.com/presentation/d/e/2PACX-1vRi7MwTtHf4XN1Zc8l_j6VWxvocAF-yYYym8Xu4g4GXLYyThx8Wryj32uL2WjqR1GBMqMp0ZSC8Hy/pub?start=false&loop=false&delayms=3000
- Daily Announcements (AM/PM)
- Friday Folder & Auto-Dialer
- Parent Conferences
- Joint PTO (North & South)
- Google Classroom
- Email

Crossroads Middle School 2023-2024

NORTH	SHARED STAFF	SOUTH
PRINCIPAL Kimberly Bynoe	Interim ELA/S.S. Supervisor Dr. Jonathan Medina	PRINCIPAL Bonnie H. Capes
ASSISTANT PRINCIPALS Meg Berry & Mark Riccardi	Special Education Supervisor Mrs. Michele SantoMaria2	ASSISTANT PRINCIPALS Sondra Hinson & Mark Kmiec
6th Grade Units Comets Neptune Polaris	STEM Supervisor Dr. Aparna Rajagopal	6th Grade Units Apollo Aurora Phoenix
7th/8th Grade Units Theta Rho Tau Sigma Kappa Zeta	K-12 Music Supervisor Mr. Robert Sears	7th/8th Grade Units Chi Delta Gamma Alpha Beta Omega
Support Staff Deans, SPS, Counselors, CST, Bridge	WL & ELL Supervisor Mr. Thomas Decker	Support Staff Deans, SPS, Counselors, CST, Bridge
Health/PE Supervisor Mr. John Harding		
Technology Support Reggie Carlson		
Extra Curricular: Mr. Mark Kmiec Athletics: Mr. CJ Hendricks		

Crossroads Middle School Structure

Three 6th Grade Units
Approximately 110 students per unit

UNITS

Changing Classes & Teachers

5 Core Unit Subjects

LANGUAGE ARTS- Writing
LITERATURE - Reading
MATH
SCIENCE
SOCIAL STUDIES

~ APOLLO ~ AURORA ~ PHOENIX ~

CROSSROADS MIDDLE SCHOOL

A TYPICAL DAY

The Basics



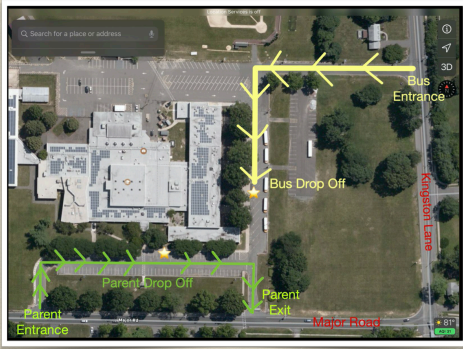
ARRIVAL & DISMISSAL

- 8:15am - Homeroom Bell
- 3:00pm - Dismissal Bell
- 4:15/5:15pm - Late Bus (Sports/ Clubs)

LUNCH/BREAKFAST

- Breakfast (Grab & Go)
- 30 Minutes; Middle School Menu; ID Card
- Recess (if possible)
- Chartwells (https://www.sbschools.org/school_information/school_information/lunch_information)

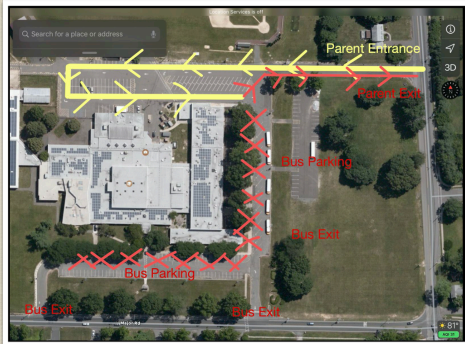
Arrival Map



A Student's Typical Week

PER/DAY	MONDAY "A"	TUESDAY "B"	WEDNESDAY "A"	THURSDAY "B"	FRIDAY "A"
1	MATH	EXCEL	MATH	EXCEL	MATH
2		ENCORE - LESSONS		ENCORE - LESSONS	
3	ENCORE - WL	SCIENCE	ENCORE - WL	SCIENCE	ENCORE - WL
4	ENCORE - PE		ENCORE - PE		ENCORE - PE
5	SOCIAL STUDIES	LANGUAGE ARTS	SOCIAL STUDIES	LANGUAGE ARTS	SOCIAL STUDIES
6					
7	LUNCH	LUNCH	LUNCH	LUNCH	LUNCH
8	LITERATURE	ENCORE - HEALTH	LITERATURE	ENCORE - HEALTH	LITERATURE
9		HAP		HAP	

Dismissal Map



Support Services

Student Personnel Services (SPS)

- Counselors
- Child Study Team
- Behaviorist
- BRIDGE Center (Rutgers UBHC)

Additional Support

- D102 - Dean & Assistant Principals
- Principal

Support Services

Special Education

- ➔ Supervisors
 - Michele SantaMaria2
 - Emily Wright
- ➔ Child Study Team
 - Lori Gaynor (LD/TC)
 - Brooke Matthews (School Social Worker)
 - Kelsey Mininger (School Psychologist)
 - Dr. Rebecca Hye (Behaviorist)

Support Services

PROGRAMS

- ➔ Self-Contained
 - Life Skills, Autism
 - Multiple Disabilities (MD)
 - Learning/Language Disabilities (LLD)
- ➔ Resource (RC)
 - Small pull-out setting
- ➔ Inclusion
 - In Class Resource (ICR)
 - In Class Support (ICS)
 - General Education Setting

Support Services



School-Wide Activities

- ➔ NJ Unified Champion School
- ➔ Lunch or HAP Buddies
- ➔ Autism Awareness Month (April)
- ➔ Special Olympics/Unified Sports
- ➔ Special Olympics Torch Run (June)

Health Office



- Maintains health records/absentee and gym excuse notes
- Individual Healthcare Plans for students with health concerns
- Resource for Community: health & medical services
- Emergency Care for illness/injury

***NOTE: State Required Immunizations for 6th Grade**

Please contact Mrs. Jennifer Duvelsdorf with any questions at Jennifer.Duvelsdorf@sbschools.org

OUR 6TH GRADE CURRICULUM

Sixth Grade English Literature Studies

GENRE-BASED UNITS

- Realistic Fiction
- Memoir
- Dystopian



CORE NOVELS

- *Restart*, *Of Beetles and Angels*, *Gathering Blue* (or *The Giver*)

Extended Development within a GENRE

- Book Clubs
- Information Research
- Independent Reading
- Poetry
- Short Stories

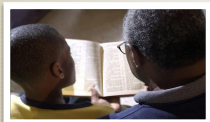
Word Study Program

- Greek & Latin Affixes

OTHER Valued Practices

- Read-Aloud
- Close Reading
- Speaking & Listening Skills

INDEPENDENT READING PROGRAM: P.A.T.T.E.R.N.S.



Parents
And
Teachers
Together,
Encouraging the
Reading of Nonfiction &
Novel**S**

Summer Reading

To inspire and celebrate reading!



CROSSROADS READS WEBSITE
<https://crossroadsreads.weebly.com/>

- All students should read a book of their choice during the summer. They will discuss the book with their classmates when they return to school in September.
- Check out our Staff Recommendations!

Sixth Grade English Writing/Language Arts

Writing Process & On-Demand Writing

- Compose in all Genres
 - Narrative
 - Argument
 - Information
- Structure, Elaboration, Craft, & Meaning
- Writing in Response to Reading (analyze & synthesize)



USE OF EVIDENCE FROM TEXT TO SUPPORT IDEAS

Sixth Grade Social Studies

World History & Ancient Civilizations

- Beginning of Human Societies & Mesopotamia
- Ancient Egypt
- Ancient India
- Ancient China
- Ancient Greece
- Ancient Rome & Byzantine Empire



KEY PRACTICES

- Synthesis of knowledge across civilizations
- Comparison and contrast of Ancient Civilizations to modern-day United States
- Literacy course to hone in on skill development in reading, writing, speaking, and listening.

Mathematics

CONTENT Standards

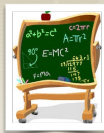
- Ratios and Proportional Relationships
- The Number System
- Expressions and Equations
- Geometry
- Statistics and Probability



PRACTICE Standards

- Make sense of problems and **persevere** through them
- **Reason** abstractly and quantitatively
- Construct viable **arguments** and **critique** the reasoning of others
- Use **appropriate tools** strategically
- Attend to **precision**
- Look for and express regularity in **repeated reasoning**

Mathematics

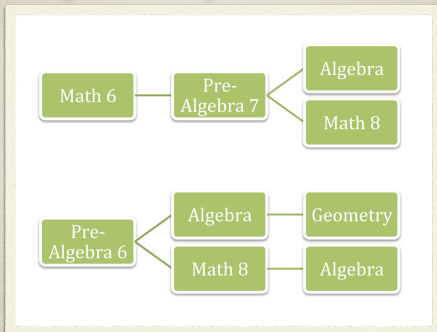


6th Grade math courses:

- Math 6 (on grade level)
- Pre-Algebra (accelerated)

Placement letters will be uploaded to GENESIS in early July.

Progression of Math Courses



Summer Math Packet

For Information about Science, Tech,
Engineering and Math courses grades 6-12,
please visit...

ACADEMIC PROGRAMS: Middle School Math
www.tinyurl.com/sbsdstem

Science



Units of Focus

- Geology
- Astronomy
- Meteorology

Enrichment Opportunity

- 6th Grade Science Fair (April)

NGSS: Science and Engineering Practices

- Asking questions (for science) and defining problems (for engineering)
- Developing and using models
- Planning and carrying out investigations
- Analyzing and interpreting data
- Using mathematics and computational thinking
- Constructing explanations (for science) and designing solutions (for engineering)
- Engaging in argument from evidence
- Obtaining, evaluating, and communicating information

Encore Classes Beyond the CORE

- World Language
 - EXPLORATION PROGRAM - Spanish, French, & Latin
- Encore Classes
 - Art, Music, Health, Digital Tools 1 (SCRATCH coding)
- Physical Education
 - Team Sports, Individual Sports, Fitness, & Lifelong Activities
- Health
 - 6th, 7th, and 8th grade courses
- HAP
 - School-wide everyday - chorus and access to teacher support
- EXCEL
 - Targeted and Personalized Instruction

World Language

6th Grade Exploration

"Through learning language, we learn about culture. Through learning culture, we learn respect for others. Through learning respect for others, we can hope for peace."
 Claire Kramsh

- **6th grade** - Exploratory Experience
 - French, Latin, & Spanish for one trimester each
 - Selection - At the end of 6th grade, each student will select one of the language offerings to continue to study in 7th and 8th grades. The language your child selects will be the language they will keep for the entirety of Middle School
- **7th & 8th Grade** - Selected Language Study

Interscholastic Athletics & Clubs

- All sports are open to 7th & 8th Grade Students
- Field Hockey, Wrestling, Boys/Girls Lacrosse are open to 6th grade as well.
 ATHLETICS WEBSITE https://sr.sbschools.org/departments/athletics/athletics_information
- Club Program open to All Grade Levels

All clubs and activities are "Pay-to-Participate" using CommunityPass

School Musical	Robotics
Maker Space	Math Counts Team
Photography Club	Special Olympics Club
Art Club	Academic Challenge Teams
Badminton	Science Olympiad
Chess Club	Future Business Leaders
Literacy Leaders	Coding Club
Cricket Club	Wellness Club
Engineering & Design	Anime & Gaming

Crossroads Music Program

"Performance at its finest!"

The South Brunswick School District has been designated as one of the "2016, 2017, 2018, 2020, 2021, 2022 & 2023 Best Communities for Music Education" by the NAMM Foundation!



Program Offerings

General Music, Orchestra, Choir, Band, Jazz, Spring Musical

Vocal Music Groups

- **XRDS Singers** (HAP)
- **Concert Choir** (HAP)
 - ✦ **Vocal Ensemble** (Auditioned Group Before School)
- **Handbell Choir** (After School)



Instrumental Music Groups

- **Strings**
 - Harmonic Orchestra
 - Melodic Orchestra
 - Symphonic Orchestra
- **Bands**
 - Concert Band
 - Symphonic Band
 - Wind Symphony
- **Jazz**
 - Jazz Ensemble
 - Jazz Band



Important Information for MUSEC

All of our music groups that meet before or after school are Pay to Participate and require registration through **Community Pass!**

- Early morning music transportation will be an option.
- You will receive information regarding registering from our MS music staff.

GENERAL INFORMATION

General Information

CODE OF CONDUCT

- Website <https://www.bethel.edu/campus-life/student-life/109296&pageid=764195>
- Student Handbook
- HIB

HOMEWORK

- 45-90 minutes as a nightly expectation.

REPORTING SYSTEM (Student Information System)

- Report Cards/Year (3)
- Letter Grade System
- GENESIS - Early August

SCHOOL SUPPLIES

- Basic (Online)
- Course/Unit Specifics (September)

LOCKERS (2)

- Hallway/Gym (\$5/PE Lock)



Student Placement

Placement into Units Based on CRITERIA

- Balance in Numbers
- Heterogeneous Grouping
- Gender Balance
- Learning/Teaching Styles
- Assessment Information



Parent Requests - You may share any additional information about your child, learning style, connections with other students or student conflicts. Send this via the **GOOGLE PARENT INPUT FORM** on or before **June 25th, 2023**.

(<https://forms.gle/AaXBoKPvEzBsu4sJA>)

SUMMER COMMUNICATIONS

- Early AUGUST: Parents will see a change in the available TABs in GENESIS
- Mid AUGUST: Principal E-MAIL to students and families
- Late AUGUST: Parents will receive an "Auto-dialer" email regarding unit placement (GENESIS)

General Information



ONLINE PRESENCE

- School Website: www.sbschools.org
- YouTube: Principal_Onthemove (<https://www.youtube.com/channel/UCxp110V1qE7yWUqmYbAuCxQ/videos>)
- Instagram*: @Principal_Onthemove (https://www.instagram.com/principal_onthemove/)
- Facebook: www.facebook.com/sbsdxdxrd
- Twitter: @SBSDXRDS (<https://twitter.com/sbsdxdxrd?lang=en>)

Technology

BRING YOUR OWN DEVICE

- Intent
- Expectations

SOCIAL MEDIA

- SAFETY
- 13 YEARS OLD

CHROMEBOOKS

- Intent
- Expectations

GOOGLE CLASSROOM

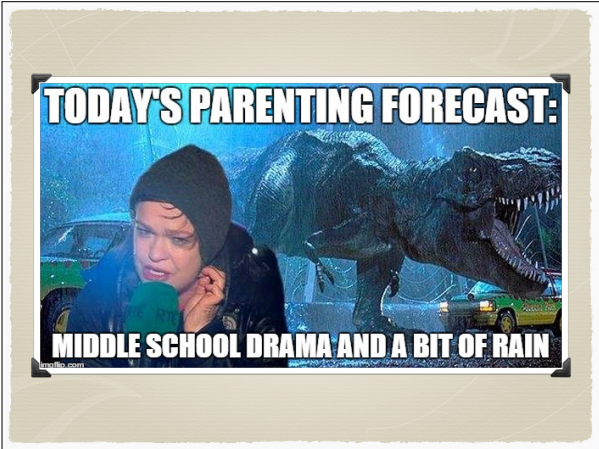
THE FOLLOWING CHECKLIST CAN HELP YOU TAKE STEPS TO KEEP YOURSELF SAFE ONLINE.

- **CHECK YOUR COMMENTS AND MESSAGES**
Have a friend check your comments and messages on "Real" (not "fake," "anonymous," or "stranger") social media, texting, email, or "chat" apps.
- **ASK TO YOUR FRIENDS ABOUT WHAT'S ON THEIR WALLS**
Ask your friends to check your posts and photos for anything you might not want to share. If a friend "likes" or posts for you on social media, check to make sure it's something you'd be proud to share with your family.
- **REVIEW YOUR ACCOUNT SETTINGS**
Always use "strong" passwords and use "private" and "strict" settings.
- **BEWARE OF FRIENDS, CONTACT, AND FOLLOWERS**
Think for a moment: do you know who you're talking to? Do you know who you're following? Do you know who you're sharing information with? Do you know who you're giving your information to? Do you know who you're giving your information to? Do you know who you're giving your information to?
- **KEEP AN EYE ON APPS THAT ARE CONNECTED TO YOUR ACCOUNT**
Check to make sure you're not giving your information to apps you don't know or trust. Be smart! In the long run, allow the company access to your phone's location.
- **DON'T FORGET PARENTS**
Remember, your parents are the most important people in your life. They should know what you're doing online. They should know what you're doing online. They should know what you're doing online.
- **REPORT**
If you see something that's not right, report it to the appropriate authority. If you see something that's not right, report it to the appropriate authority. If you see something that's not right, report it to the appropriate authority.

NetSmartz
For more resources visit www.getnetismartz.com

CROSSROADS MIDDLE SCHOOL

CLOSING THOUGHTS





Closing Thoughts

"The Middle is Messy, but it is also where the **MAGIC** happens"

- SUMMER READING & MATH
- FANTASTIC VOYAGE
- UNIT PLACEMENT EMAIL
- JOIN THE PTO - Click Link Below

<https://drive.google.com/file/d/1t8JCFxLU1RjK852to5NYGic1r5YSQqv/view?usp=sharing>

Questions or Concerns?

Bonnie Capes - Principal:
Bonnie.Capes@sbschools.org

Sondra Hinson - Assistant Principal:
Sondra.Hinson@sbschools.org

Mark Kmiec - Assistant Principal:
Mark.Kmiec@sbschools.org

Michele SantaMaria2
Special Education:
Michele.SantaMaria2@sbschools.org

Dr. Aparna Rajagopal - STEM:
Aparna.Rajagopal@sbschools.org

Dr. Jonathan (Jack) Medina -
ELA/Social Studies:
Jonathan.Medina@sbschools.org

Robert Sears - Music:
Robert.Sears@sbschools.org

Thomas Decker - World Language:
Thomas.Decker@sbschools.org

John Harding - Health/PE:
John.Harding@sbschools.org
